



Early Warning Intervention and Monitoring System (EWIMS)

Rich Marshall, MAISA Project Director for Student Supports

MiDataHub User Conference
October 14-15, 2024



MiEWIMS
Michigan Early Warning Intervention
and Monitoring System

Introductions



Who do we have in the room today? ([survey link](#))

... and a little about me.



Agenda

1. Introductions
2. Challenges and current data
3. Project overview–What is EWIMS and how does MiEWIMS enhance the process?
4. Current state
5. What's next?





Current Challenges

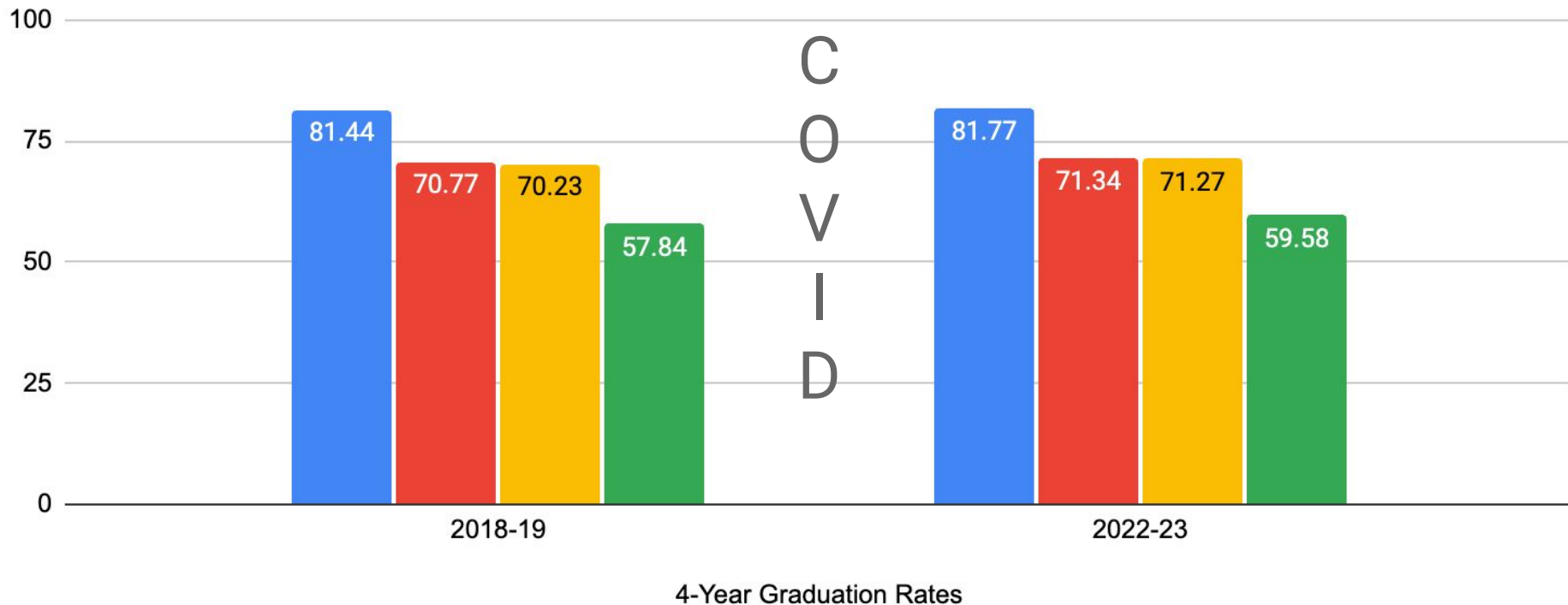
When you meet with secondary school administrators and school leaders, what are the most significant challenges to student success they are focused on today?





Michigan Four-Year Graduation Rates

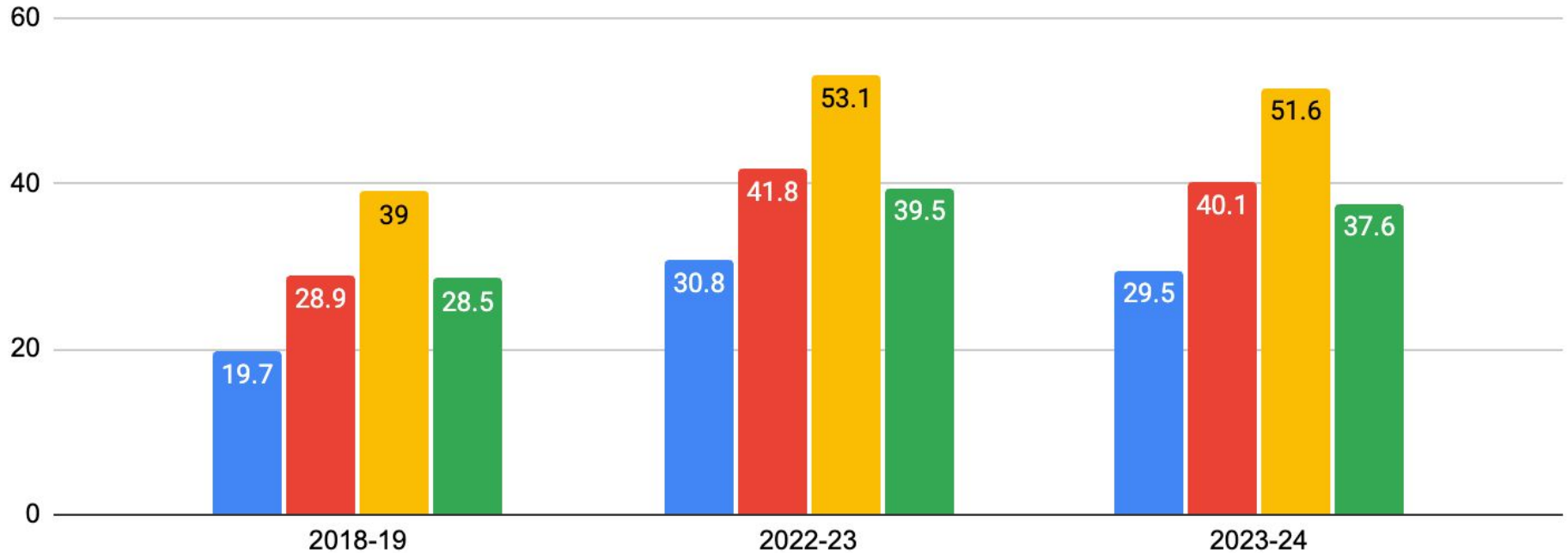
■ All Students ■ Econ Disadvantaged ■ African American ■ St w Disabilities





Michigan Percentage of Students Chronically Absent

■ All Students ■ Econ Disadvantaged ■ African American ■ St w Disabilities



Percent of Students Chronically Absent

Project Overview



MiEWIMS (25l) Language in 24-25 Budget

Highlights:

- 5 years of funding (through September 30, 2029)
- \$5 million in funding to:
 - (a) Establish statewide operational support and offer to districts the use of an integrated online tool to support local early warning and intervention.
 - (b) Establish monitoring systems to identify and support students at risk of dropping out of high school.
 - (c) Provide access to the system, develop and deliver professional learning on its uses, and coordinate with the department on regional training and support efforts.
 - (d) Provide implementation support and technical assistance resources to aid in implementing an integrated online tool to identify and support students at risk of dropping out of high school for any district in the state.



[Link to 25l Language](#)



MiEWIMS
Michigan Early Warning Intervention
and Monitoring System



Research Base for Early Warning Systems

Johns Hopkins Everyone Graduates Center

- As early as the sixth grade, school-based factors can predict who will drop out.
- Attendance, behavior, and course performance are the strongest predictors of school dropout.
- These findings have been validated by state and district studies.



GREAT LAKES Comprehensive Center at American Institutes for Research

[Link](#) to MDE EWIMS Page



Early Warning Intervention and Monitoring System (EWIMS)

EWIMS is a seven-step, data-driven, decision-making process that helps educators identify, monitor, and support students who show symptoms of risk for dropping out of high school.





MiEWIMS

Michigan Early Warning Intervention
and Monitoring System

*Integrates local district information
to address the data challenges that
historically limit EWIMS efforts.*



MICHIGAN ASSOCIATION OF INTERMEDIATE
SCHOOL ADMINISTRATORS



MiEWIMS

Michigan Early Warning Intervention
and Monitoring System



MiDataHub

Legislatively funded common data interoperability system.



**MiData
Exchange**

Consolidated EWIMS data for automated sharing statewide.



MiLaunchPad

Federated Single Sign On system. (login with local email)



**MiStrategy
Bank**

Integrated system of statewide, regional, and local strategies.



MAISA

MICHIGAN ASSOCIATION OF INTERMEDIATE
SCHOOL ADMINISTRATORS



MiEWIMS

Michigan Early Warning Intervention and Monitoring System



District Attendance
Behavior
Grade
Data

District Data from the Student
Information System



MiDataHub



MiData
Exchange



MiLaunchPad



MiEWIMS
Michigan Early Warning Intervention
and Monitoring System



MiStrategy
Bank



MiEWIMS

Michigan Early Warning Intervention
and Monitoring System

Indicator	Caution Threshold	Flag Threshold
Attendance	Student misses between 5% and 9% of instructional time	Student misses 10% or more of instructional time
Behavior	Two or more discipline referrals	One or more in or out-of-school suspensions
HS Course Performance	Grade Point Average (GPA) below 2.0 Any course in the “D” range	Cumulative GPA below 2.0 Failure in any course
MS Course Performance	ELA or Math course in the “D” range	Failure in ELA or Math course

MiEWIMS Tool Demonstration



About

MiEWIMS is a robust and integrated tool to support an Early Warning Intervention and Monitoring Process (EWIMS) in districts, schools, and classrooms. MiEWIMS supports educators in their efforts to ensure all learners will be engaged in school and on-track for graduation.

Login

MiLaunchPad

District (LEA, PSA, ISD) Users log in to MiEWIMS using your local district login information, select "Login with MiLaunchPad"

Login with MiLaunchPad



Additional Information

- [MDE EWIMS page](#)
- [MIMTSS TA Center page for Early Warning Indicators](#)
- [MIMTSS TA Center page for Early Warning System Coordinators](#)
- [MIMTSS TA Center page for Early Warning System Coordinator Training](#)
- [EduPaths EWIMS Page](#)



MiEWIMS
Michigan Early Warning Intervention
and Monitoring System

Some key advantages of MiEWIMS:

- When a student moves from one district to another, the MiEWIMS plan follows the student to the new district.
- Buildings and districts have significant control over the strategies that they will support for students in the intervention plans.
- ISD's and statewide networks can curate best practice strategies and make them available to the districts they serve.

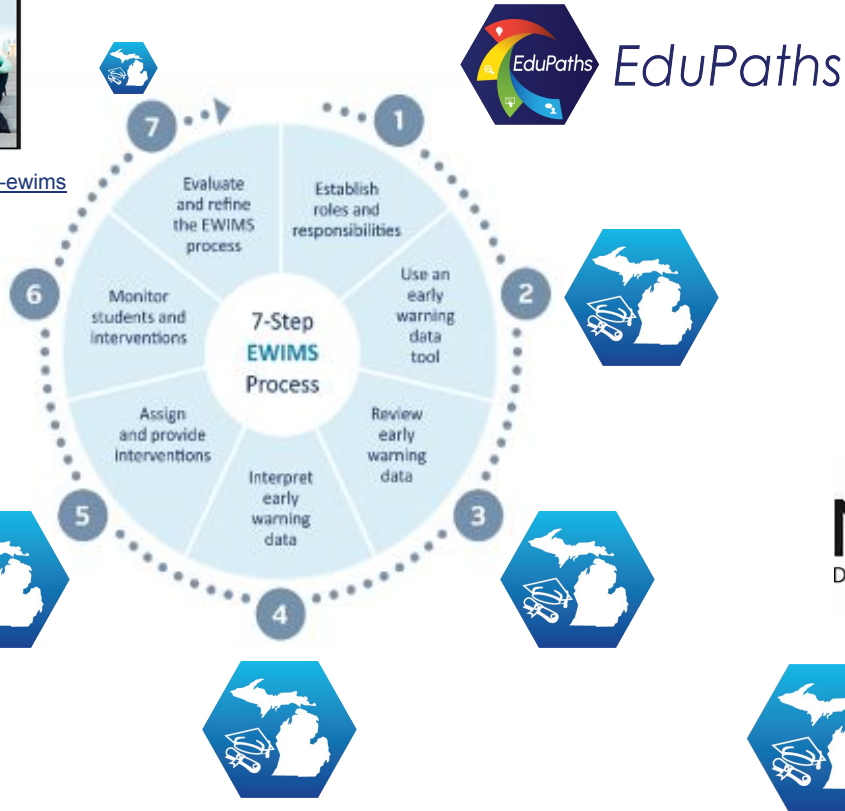




Early Warning Intervention and Monitoring System (EWIMS) in Michigan



michigan.gov/mde-ewims





MDE Partnership

- MDE and MAISA have partnered on [EWIMS](#) for eight years
 - EWIMS Research
 - [EWIMS Manual](#)
 - [EduPaths Courses](#)
 - MiEWIMS Design and Development
 - [Path Forward](#)
- MDE:
 - Has a network of trained EWIMS training specialists
 - Is working in Partnership districts on EWIMS
 - [MDE Press Release on Graduation and Dropout](#)
- MAISA
 - Designed MiEWIMS*
 - Developed MiEWIMS*
 - Is piloting the use of MiEWIMS with districts

**With significant funding and support from the Michigan MTSS TA Center.*





Implementation/Expansion Timeline (ABC Model)

MiEWIMS Tool Development Ongoing

A

Focus on Attendance, Establish key partnerships, Support existing pilot districts and ISD's, Possible additional districts in existing ISD's, Develop PD, Enhance technology infrastructure, readiness, resources & processes

C

Full Implementation of Attendance, Behavior, and Course performance in districts in up to 30 ISD's, Continued enhancement of PD, technology, infrastructure, readiness, resources & processes

2023-24

2024-25

2025-26

2026-27

27/28-28/29

Alpha and Beta Pilot Testing of MiEWIMS (Currently 51 districts in 20 ISD's)

B

Focus on Attendance and Behavior, Expand to new districts in the current 20 ISD's and add up to 5 more ISD's, Further develop PD, Further enhance technology infrastructure, readiness, resources & processes

Continued expansion to support full implementation for districts at all 56 ISD's



Tentative Plan for 24-25

MiEWIMS Tool Development Ongoing

- Receive grant funds
- Hire data integration support specialists
- Support continuing pilots
- Build implementation support resources
- Develop application process for Cohort 1 (25-26 implementation)
- Cohort 1 (Exploration and pre-installation)
 - Edupaths Coursework
 - MDE Professional Learning
 - Data Readiness testing

2023-24

Alpha and Beta Pilot Testing of MiEWIMS (Currently 51 districts in 20 ISD's)

Fall 2024

Winter 2025

- Open and review application for Cohort 1
- Refine implementation of pilots
- Train data integration specialists
- Develop PD materials for Cohort 1

Spring 2025

25-26 School Year

- Fall - Cohort 1 Implementation
- Provide Implementation Support
- Cohort 2 applications and identification



Potential Strategic Partners

- MDE
 - MiMTSS TA Center
 - MASA
 - MASSP
 - MEMSPA
 - MAASE
 - GELN and SEILN
 - *E.g. Safe and Civil Schools Strategy Curation, Training, and Support*
 - MAPSA
- ISD Leaders and Instructional Staff
 - ISD Tech and Data Teams
 - MSBO
 - MPAAA
 - SWFT





MiEWIMS

Michigan Early Warning Intervention and Monitoring System



District Attendance
Behavior
Grade
Data

District Data from the Student Information System



MiDataHub



MiData Exchange



MiLaunchPad



MiEWIMS
Michigan Early Warning Intervention and Monitoring System



MiStrategy Bank

Current State

1. Attendance data seems to be largely accurate at this point.
2. Behavior data is quite accurate, but local district behavior data entry can be an issue
3. Course grades are less likely to be accurate at this point



What's Next?

1. Develop readiness tools for integration, EWIMS process, etc.
2. Develop supporting materials and training resources
3. Continue to refine the process and tool based on input from the pilot districts



How can you help?



How can we help you?



Closing and Contact Information

Rich Marshall, MAISA Project Director for Student Supports, rmarshall@gomaisa.org

